

## ANCHOR HANDLING & TOWING VESSEL



The *Anteos* is an Open Sea Anchor Handling & Towing Vessel built for worldwide operations.

Built in China in 2000, she was acquired in 2008 and extensively upgraded to suit her current duties, including replacement of both Main Engines in 2010 and major upgrade to the accommodation and living spaces and services.

She now operates mainly as a Towing Vessel for Cable Laying units on a worldwide basis and, in addition, offers supply and auxiliary services on the various projects that she is involved in.

She holds an extensive track record on a variety of offshore projects and is being constantly kept up to date with new equipment and careful maintenance to ensure zero down-time and highest possible performance on her employments.

### MAIN PARTICULARS

LENGTH  
37.0 M

BREADTH  
11.4 M

DEADWEIGHT  
364.5 MT

BOLLARD PULL  
45 MT

ACCOMMODATION  
14 PERSONS

FLAG  
CYPRUS

CLASSIFICATION  
AMERICAN BUREAU OF SHIPPING

OWNER  
THALIA SHIPPING LTD.

## GENERAL SPECIFICATION

### GENERAL

Classification: ABS ✕A1, Towing Vessel (E), ✕AMS  
Built.....China, 2000

### MAIN PARTICULARS

Length Overall..... 37.00 m  
Breadth Moulded ..... 11.40 m  
Depth Moulded ..... 4.95 m  
Draught (Maximum) ..... 4.35 m  
Gross Tonnage ..... 466  
Bollard Pull ..... 45 MT

### ACCOMMODATION

Accommodation for 14 persons  
2 x single cabins – Captain class (Private WC)  
2 x double cabins – Officer class (Shared WC)  
2 x four-bunk cabins – Rating class (Comm. WC)  
1 x Combined Mess–Day Room

### POWER AND PROPULSION

2 x M/E CAT 3512B, each 1,575 BHP (Blt. 2009)  
2 x Reintjes WAF772 Reduction Gears  
2 x Mikado NiAlBr Props in Kort Nozzles  
2 x Rudders on Kort Nozzles (Linked)  
1 x Bow Thruster, Ulstein 45–TV, 3.7 Tons  
3 x G/E Detroit Diesel 8V–92TA each 300 kW

### TANK CAPACITIES

Fuel (MGO) ..... abt. 245 MT  
Fresh Water..... abt. 80 MT (Production 5 T/D)  
Dispersant ..... abt. 13 m<sup>3</sup>  
Foam .....abt. 13 m<sup>3</sup>

### SPEED & CONSUMPTION

Max Speed (Free Running)..... abt. 13.0 kn  
Cons. on Max Speed .....abt. 10.5 T/D  
Economy Speed..... abt. 10.0 kn  
Cons. on Economy Speed .....abt. 7.0 T/D  
Port Consumption..... abt. 0.5 T/D

### LIFTING APPLIANCES – CRANES

1 x HAP, Model BK21–3, Electro–Hydraulic,  
1630 kg @ 9.74m & 2040 kg @ 7.96m

### MOORING & ANCHORING SYSTEMS

1 x Twin Anchor Windlass & Mooring Winch  
2 x Stockless Anchors, each 680 kg  
2 x 220m steel stud link Anchor Chain

### TOWING EQUIPMENT

1 x Shark Jaw (retractable) – Karm Fork Oy  
2 x Towing Pins (retractable) – Karm Fork Oy  
2 x Quarter Pins  
1 x Twin Drum (side–by side) Towing Winch:  
50 MT Pull @ 0~13 m/min  
128 MT Brake Holding (1<sup>st</sup> layer)  
2 x 750m Lengths Towing Wire (52mm)  
2 x Wire Storage Reels:  
6 MT Pull @ 12 m/min  
750m / 52mm wire capacity each  
1 x Tugger Winch 10 MT Pull @ 14 m/min  
1 x Stern Roller 200 MT SWL  
Complete Towing Tackle and Fittings

### MARPOL

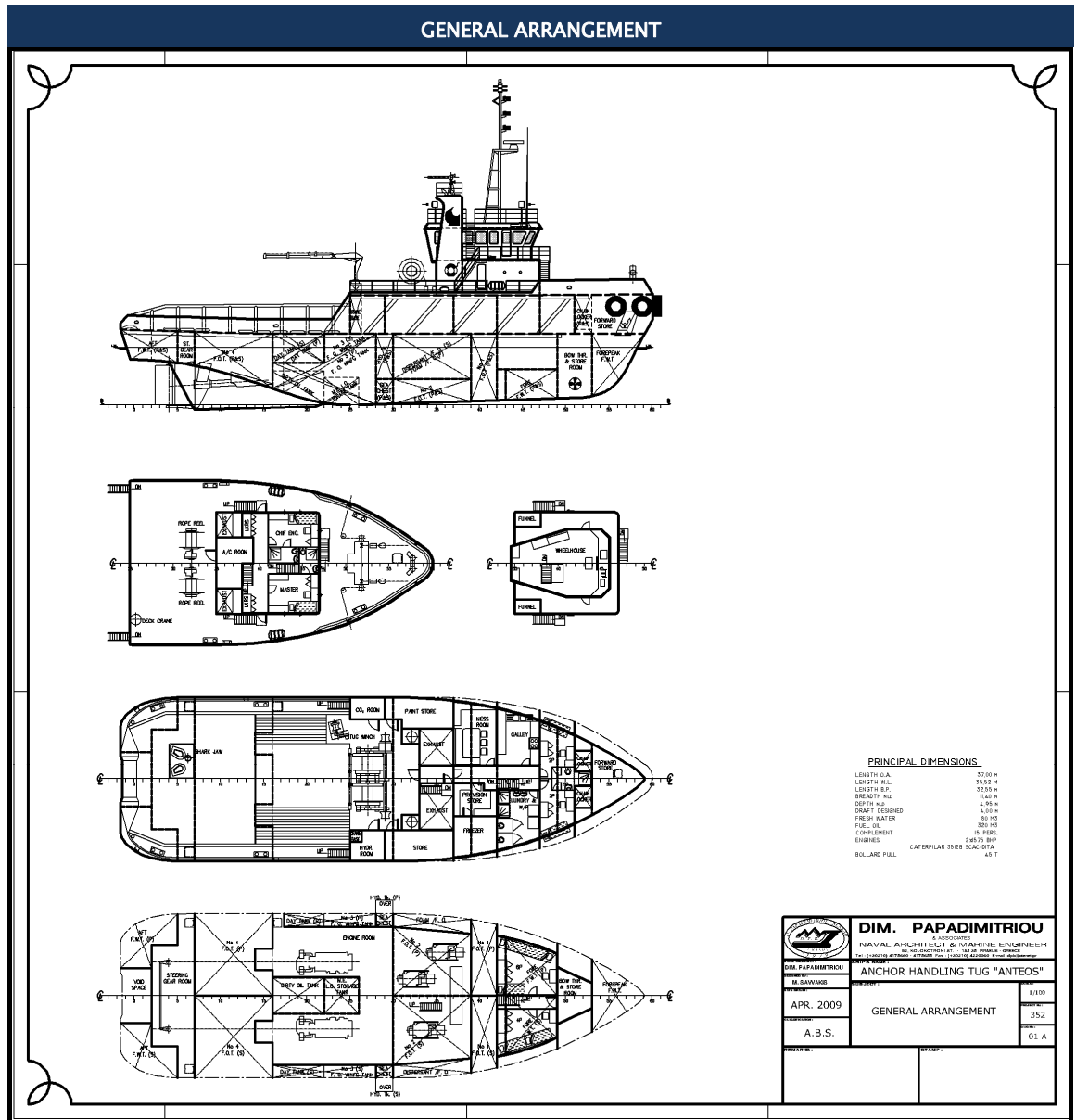
1 x Oily Water Separator in E/R  
1 x Vacuum Black Water Collection System  
1 x Sewage Treatment Plant (MARPOL Compliant)  
2 x 4m Retractable Oil Dispersant Booms

### NAVIGATION & COMMUNICATIONS

2 x Radars (X–Band) – JRC  
1 x GPS Plotter  
1 x Gyroscopic Compass  
1 x AIS Unit  
2 x DGPS for Navigation  
GMDSS Approved Communications Systems  
1 x FleetBroadband 250 Sat Phone

### LIFE SAVING – FIRE FIGHTING

2 x 15 Person Self Righting Liferafts  
Life Saving Appliances for 15 persons  
2 x SART  
1 x Free Float EPIRB  
Fire Detection & Alarm System  
Centralized CO<sub>2</sub> Fire Extinguishing System in E/R  
2 x Fire Monitors 3,000 lt/min @ 120m Head  
1 x Fire Pump 360 m<sup>3</sup>/h w/ Foam Injection Pump



**Note:** All above information is without guarantee and subject to change at any time