

MAIN PARTICULARS	
LENGTH O.A.	25.50 m
LENGTH B.P.	23.60 m
BREADTH O.A.	5.50 m
BREADTH WLD.	6.30 m
DRAHT	3.45 m
DRAHT	2.50 m
FR. SFG.	0.40 m
GROSS TONNAGE	100
NET TONNAGE	30
COMPLEMENTS	3 PER.

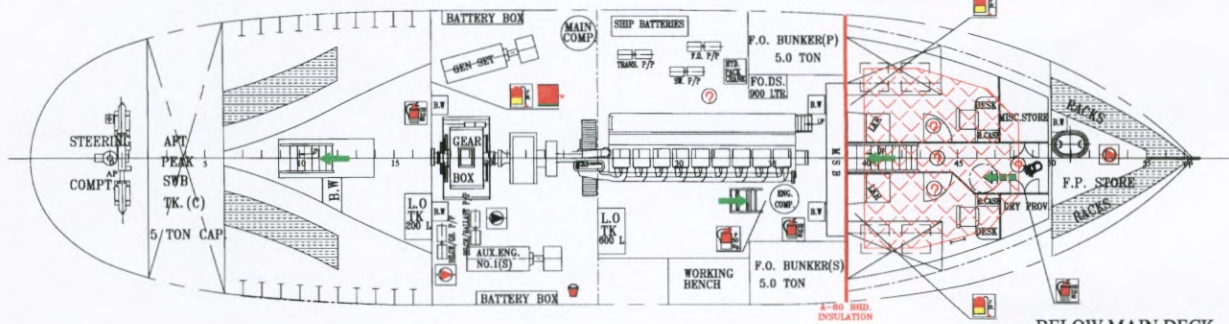
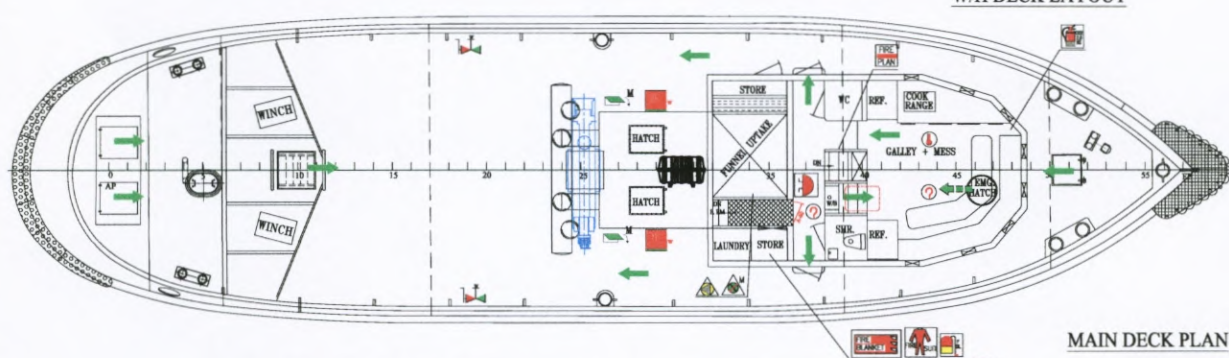
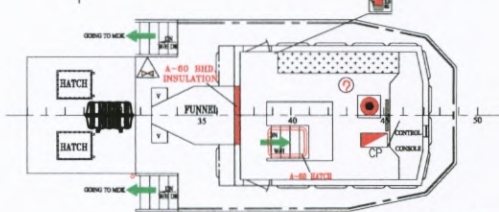
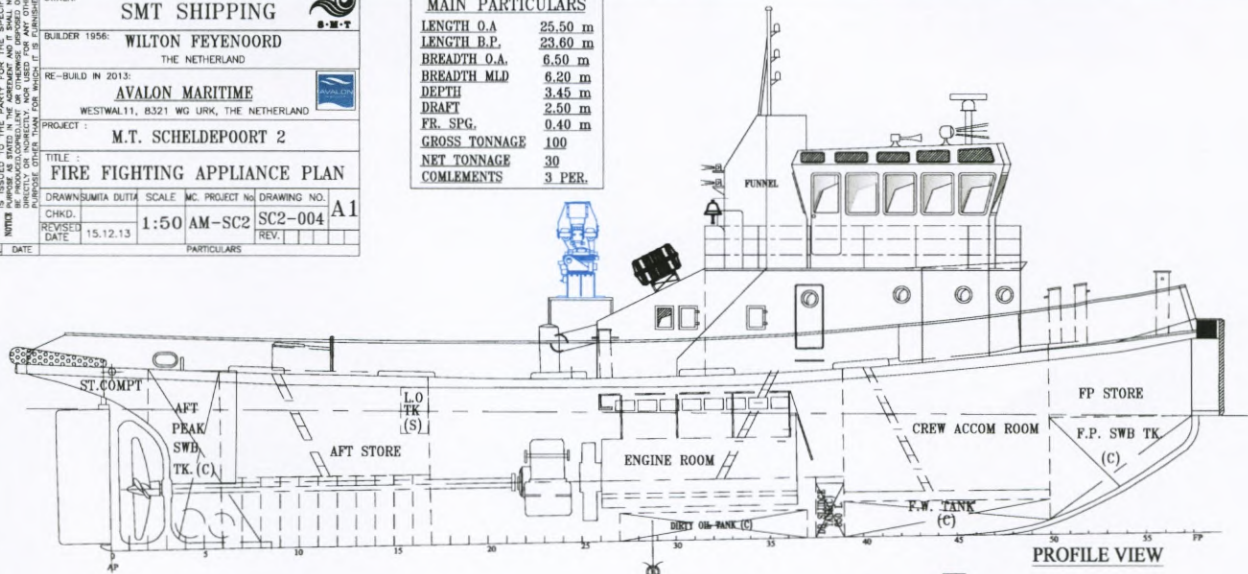
PARTICULARS	
OWNER:	SMT SHIPPING
DESIGNER:	WILTON FEYENOORD THE NETHERLAND
RE-BUILD IN:	2013
PROJECT:	AVALON MARITIME WESTWALL 1, 8321 MG WMS, THE NETHERLAND
TITLE:	M.T. SCHELDEPOORT 2 LINES PLAN
DRAWN:	DATE: 03.01.13
SCALE:	1:25
PROJECT NO.:	AM-SC2
DRAWING NO.:	SC2-006
REV.:	A1

PRODUCED BY AN AUTODESK EDUCATIONAL PRODUCT

PRODUCED BY AN AUTODESK EDUCATIONAL PRODUCT

OWNER:	SMT SHIPPING
BUILDER 1956:	WILTON FEYENOORD THE NETHERLAND
RE-BUILD IN 2013:	AVALON MARITIME WESTWAL 11, 8321 WG URK, THE NETHERLAND
PROJECT:	M.T. SCHELDEPOORT 2
TITLE:	FIRE FIGHTING APPLIANCE PLAN
DRAWN/SUMITA DUTTA	SCALE: MC PROJECT NO: DRAWING NO:
CHKD:	1:50 AM-SC2 SC2-004 A1
REVISED DATE:	15.12.13
REV. DATE:	PARTICULARS

MAIN PARTICULARS	
LENGTH O.A.	25.50 m
LENGTH B.P.	23.80 m
BREADTH O.A.	6.50 m
BREADTH MLD	6.20 m
DEPTH	3.45 m
DRIFT	2.50 m
FR. SPG.	0.40 m
GROSS TONNAGE	100
NET TONNAGE	30
COMPLEMENTS	3 PER.



SYMBOL	DESCRIPTIONS	QTY.	LOCATION
	FIRE PUMP CENTRIFUGAL TYPE (CAP.-15 Cu.M./hr. @ 25 MWC)	1	ENGINE RM.
	BLDG PUMP CENTRIFUGAL TYPE (CAP.-15 Cu.M./hr. @ 25 MWC)	1	ENGINE RM.
	EMERGENCY FIRE PUMP CENT. (DIESEL ENGINE DRIVEN)(CAP.-15 Cu.M./hr. @ 25 MWC)	1	FP STORE
	FIRE HYDRANT 65 NB	2	MAIN DK - 2
	FIRE HOSE BOX WITH 12M-65 FIRE HOSE & 16 mm. DIA. NOZZLE.	3	ENGINE ROOM-1 MAIN DK - 2
	FIRE LINE 65 NB.	1	AS SHOWN
	FIRE ALARM CONTROL PANEL	1	WHEEL HOUSE - 1
	D.C.P. TYPE PORTABLE FIRE EXTINGUISHER CAP.-50 Kg.	1	ENGINE ROOM - 1
	CO2 TYPE PORTABLE FIRE EXTINGUISHER CAP.- 5.0 Kg.	1	ENGINE ROOM - 1
	CO2 TYPE PORTABLE FIRE EXTINGUISHER CAP.- 2.0 Kg.	4	W/H - 1, GALLEY - 1 CREW ACCOM - 1 APT STORE - 1
	2L PORTABLE FOAM APPLICATOR UNIT	2	CREW ACCOM - 2
	6 L PORTABLE FOAM APPLICATOR UNIT	2	ENGINE ROOM - 1 MAIN DK LAUNDRY-1
	CLOSING DEVICE FOR VENTILATION INLET & OUTLET FOR M.V.C. SPACES.	---	---
	CLOSING DEVICE FOR VENTILATION INLET & OUTLET FOR ACCOM. & SERVICE SPACES.	---	---
	GENERAL ALARM PUSH BOTTON	1	W/H DK - 1

SYMBOL	DESCRIPTIONS	QTY.	LOCATION
	GENERAL ALARM BELL	1	M. DK PASSAGE - 1
	FIRE CONTROL PLAN	1	MAIN DECK - 1
	PRIMARY MEANS OF ESCAPE WAY	---	W/H DK. AS SHOWN
	SECONDARY MEANS OF ESCAPE WAY	---	W/H DK. AS SHOWN
	FIRE BUCKET	1	ENGINE RM.
	REMOTE STOP FOR ENGINE VENTILATION.	1	MAIN DECK - 1
	HEAT DETECTOR	2	GALLEY - 1
	SMOKE DETECTOR	7	GALLEY - 1, ACCOM-4 ENG. RM - 1 WHEEL HOUSE - 1
	REMOTE STOP FOR F.O. TRANSFER PUMP	1	MAIN DECK - 1
	EMERGENCY REMOTE CONTROL L.O. TANK.	1	WHEEL HOUSE DK. - 1
	FIRE BLANKET	1	MAIN DECK - 1
	FIRE SUIT SET	1	MAIN DECK - 1

GENERAL NOTES

1. ALL DIMENSIONS SHOWN ARE IN MILLIMETRES UNLESS OTHERWISE NOTED.
2. DO NOT SCALE FROM DRAWING.
3. ALL MATERIALS USED ARE TO BE GOOD QUALITY MARINE GRADE.
4. IT IS THE BUILDERS RESPONSIBILITY TO CROSS-CHECK ALL DIMENSIONS & SPECIFICATIONS ON ALL RELATED PLANS. SHOULD ANY DISCREPANCY BE FOUND, THEY SHALL BE BROUGHT TO THE ATTENTION OF THE DESIGNER & RECONCILED, BEFORE ANY SUCH ITEM IS FABRICATED OR ASSEMBLED.

OWNER: **SMT SHIPPING**

BUILDER 1956: **WILTON FEYENOORD**
THE NETHERLAND

RE-BUILD IN 2013:
AVALON MARITIME
WESTWAL 11, B321 WC URK, THE NETHERLAND

PROJECT: **M.T. SCHELDEPOORT 2**

TITLE: **LIFE SAVING APPLIANCE PLAN**

DRAWN: SUMITA DUTTA SCALE: M.C. PROJECT NO: DRAWING NO: **A1**

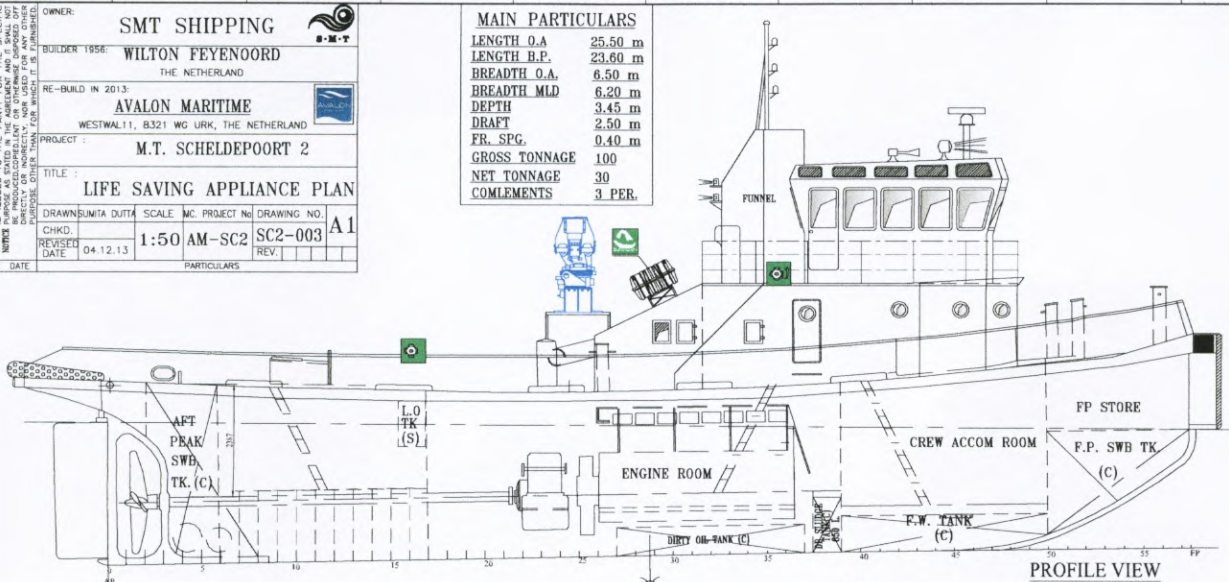
CHKD: **1:50 AM-SC2 SC2-003**

REVISED DATE: 04.12.13 REV: **REV.**

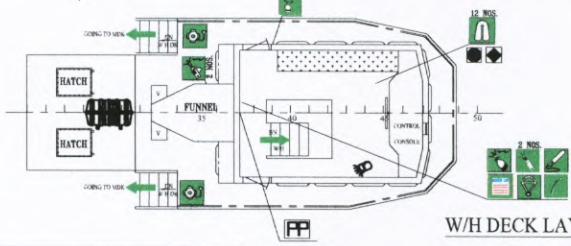
REV. DATE: PARTICULARS:

MAIN PARTICULARS

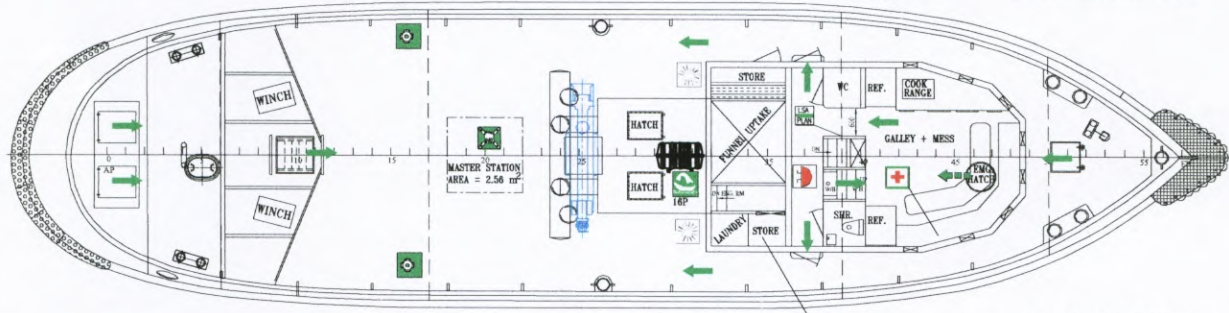
LENGTH O.A.	25.50 m
LENGTH B.P.	23.60 m
BREADTH O.A.	6.50 m
BREADTH MLD	6.20 m
DEPTH	3.45 m
DRAFT	2.50 m
FR. SPG.	0.40 m
GROSS TONNAGE	100
NET TONNAGE	30
COMPLEMENTS	3 PER.



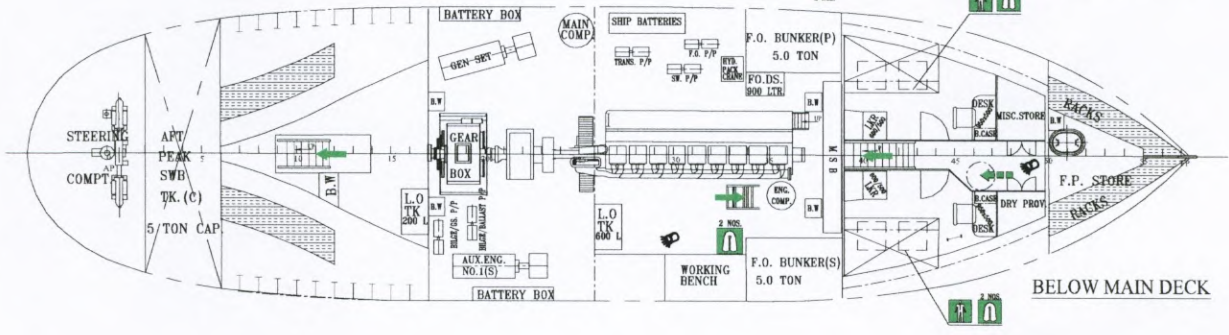
PROFILE VIEW



W/H DECK LAYOUT



MAIN DECK PLAN



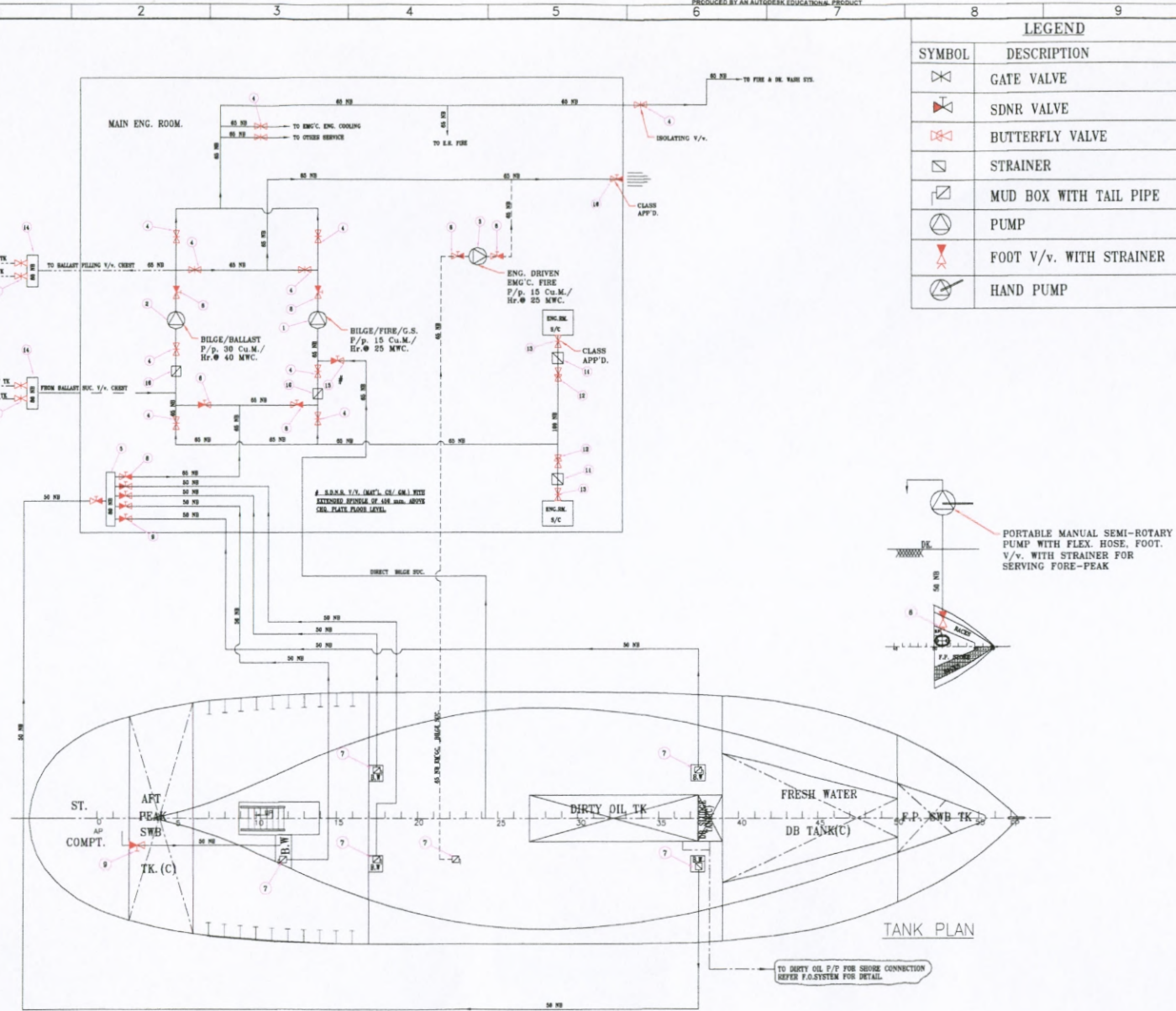
BELOW MAIN DECK

SYMBOL	DESCRIPTIONS	QTY.	LOCATION
[Symbol]	LIFE RAFT (16 PERSONS)	1	MAIN DK AS SHOWN (CAPABLE TO LAUNCH BY HAND P&S)
[Symbol]	30" LIFE BUOY MARKED WITH VESSEL NAME & P.O.R.	2	MAIN DK AS SHOWN
[Symbol]	30" LIFE BUOY WITH SELF IGNITING LIGHT	2	W/H DK AS SHOWN
[Symbol]	LIFE JACKET WITH LIGHT & WHISTLE	20	ENGRM -2, BELOW MOK-2 MAIN DK -2
[Symbol]	FIRST AID KITS	1	MAIN DECK - MESS
[Symbol]	LINE THROWING APPLIANCE (4 NOS. 1 SET)	1SET	W/H DK AS SHOWN
[Symbol]	ROCKET PARACHUTE FLARES (12 NOS. 1 SET)	1SET	W/H DK AS SHOWN
[Symbol]	EMERGENCY POSITION INDICATING RADIO BEACON (EPIRB.) FLDAI FREE TYPE	1SET	W/H DK AS SHOWN
[Symbol]	2-WAY V.H.F. RADIO TELEPHONE EQUIP.	2SET	W/H DK AS SHOWN
[Symbol]	HAND HELD VHF RADIO WITH ADAPTOR & DESKTOP CHARGER (GONDOS TYPE) FOR EMERG. COMMUNICATION	2SET	W/H DK AS SHOWN
[Symbol]	SEARCH & RESCUE LOCATING DEVICES (RADAR TRANSPONDER-S A R T)	1SET	W/H DK AS SHOWN
[Symbol]	SURVIVAL CRAFT DISTRESS SIGN (RED HAND FLARE)	1SET	W/H DK AS SHOWN
[Symbol]	IMMERSION SUIT	2	BELOW M.D.K - 2

SYMBOL	DESCRIPTIONS	QTY.	LOCATION
[Symbol]	MASTER LIST	1	W/H DK AS SHOWN
[Symbol]	MASTER STATION (2.56 Sq.M.)	--	MAIN DK AS SHOWN
[Symbol]	GENERAL ALARM BELL **	1	MAIN DK AS SHOWN
[Symbol]	LSA PLAN DISPLAY	1	M. DK -1
[Symbol]	EMBARKATION LIGHTS	--	NEAR MASTER STATION
[Symbol]	DOLPHIN TORCH WITH BV. BAT.	3	ENGRM -1, BELOW MOK-1 W/H - 1
[Symbol]	PRIMARY MEANS OF ESCAPE WAY	--	W/H DK AS SHOWN
[Symbol]	SECONDARY MEANS OF ESCAPE WAY	--	W/H DK AS SHOWN
[Symbol]	INTERNATIONAL CODE FLAG	1	W/H DK AS SHOWN
[Symbol]	SHIP BELL	1	W/H DK AS SHOWN
[Symbol]	BLACK DIAMOND SHAPE	1	STORED IN W/H
[Symbol]	BLACK BALL SHAPE	3	STORED IN W/H

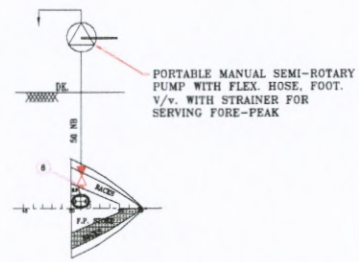
GENERAL NOTES

1. ALL DIMENSIONS SHOWN ARE IN MILLIMETRES UNLESS OTHERWISE NOTED.
2. DO NOT SCALE FROM DRAWING.
3. ALL MATERIALS USED ARE TO BE GOOD QUALITY MARINE GRADE.
4. IT IS THE BUILDERS RESPONSIBILITY TO CROSS-CHECK ALL DIMENSIONS & SPECIFICATIONS ON ALL RELATED PLANS. SHOULD ANY DISCREPANCY BE FOUND, THEY SHALL BE BROUGHT TO THE ATTENTION OF THE DESIGNER & RECONCILED, BEFORE ANY SUCH ITEM IS FABRICATED OR ASSEMBLED.



LEGEND	
SYMBOL	DESCRIPTION
	GATE VALVE
	SDNR VALVE
	BUTTERFLY VALVE
	STRAINER
	MUD BOX WITH TAIL PIPE
	PUMP
	FOOT V/v. WITH STRAINER
	HAND PUMP

BILL OF MATERIAL					
PT.	QTY.	MAT'L	SIZE	DESCRIPTION	REMARKS
1	1	STD.	---	BILGE/FIRE/G.S. P/p. 15 Cu.M./ Hr. @ 25 MWC.	
2	1	STD.	---	BILGE/BALLAST P/p. 30 Cu.M./ Hr. @ 40 MWC.	
3	1	STD.	---	ENG. DRIVEN EMG.C. FIRE P/p. 15 Cu.M./ Hr. @ 25 MWC.	
4	15	CL/G.M.	65 NB	GATE V/v.	
5	1	G.L.	80 NB	AFT. BILGE V/v CHEST	
6	1	CL/G.M.	50 NB	FOOT V/v. WITH STRAINER	
7	6	CL/G.M.	50 NB	MUD BOX WITH TAIL PIPE	
8	6	CL/G.M.	65 NB	SELF CLOSING N.R. VALVE	
9	6	CL/G.M.	50 NB	SELF CLOSING N.R. VALVE	
10	2	G.L.	65 NB	STRAINER	
11	2	CL/G.M.	100 NB	STRAINER	
12	2	CL/G.M.	100 NB	BUTTERFLY V/v.	
13	2	CL/G.M.	100 NB	GATE VALVE	
14	2	G.L.	80 NB	BALLAST VALVE CHEST	
15	1	C.S./G.M.	65 NB	SDNR V/v. WITH EXTENDED SPINDLE.	
16	1	C.S./G.M.	65 NB	SDNR V/v.	CLASS APP'D.



CAL'CN. OF MAIN BILGE SUC.
 $d = 25 + 1.68/\sqrt{(B+D)}$
 $d = 25 + 1.68/\sqrt{25.55} (6.2+3.25)$
 $d = 51.10 \text{ mm PROVIDE } 65 \text{ NB.}$

CAL'CN. OF BRANCH BILGE SUC.
 $d = 25 + 2.16/\sqrt{(B+D)}$
 $d = 25 + 2.16/\sqrt{6.2+3.25}$
 $d = 44.92 \text{ mm PROVIDE } 50 \text{ NB.}$
 $c = \text{LENGTH OF COMPT.}$

CAL'CN. OF BILGE P/p. CAP.
 $Q = 5.75 \times d^2 \times 10^{-3} \text{ Cu.M./Hr.}$
 $Q = 5.75 \times 51.10^2 \times 10^{-3} \text{ Cu.M./Hr.}$
 $Q = 15 \text{ Cu.M./Hr.}$

TANK PLAN

MAIN PARTICULARS	
LENGTH O.A.	25.55 m
LENGTH B.P.	23.00 m
BREADTH O.A.	6.50 m
BREADTH MLD	6.20 m
DEPTH	3.45 m
DRAFT	2.50 m

REV.	DATE	PARTICULARS
OWNER:	SMT SHIPPING	
BUILDER 1956:	WILTON FEYENOORD THE NETHERLAND	
RE-BUILD IN 2013:	AVALON MARITIME WESTWAL 11, 8321 WG URK, THE NETHERLAND	
PROJECT:	M.T. SCHELDEPOORT 2	
TITLE:	BILGE, BALLAST & FIRE SYS.	
DRAWN:	SUMITA DUTTA	SCALE: 1:75
CHKD:		MC PROJECT NO: AM-SC2
REVISED:	17.12.13	SC2-005
DATE:		REV: